



iBright™ 2X4

ECO Panel

Model:

FPUS24L3400002

FPUS24L3500002

iBright™ Flat LED Panel is a well-designed, lay-in ceiling troffer fixture widely used in offices, hospitals, and other professional locales.

iBright™ LED Panel has an outstanding luminous efficacy of 90lm/W achieved by utilizing ultra-bright SMD LEDs in tandem with Japanese-design reflective materials.

Thanks to its good heatsink design, iBright™ LED Panel has unbelievable low In-situ temperature 33 °C. Calculated L70 lifetime is 94,000h.

Performance Summary

Input: 50W, 100-277VAC 50/60HZ

Luminous efficacy: Typ. 90 lm/W

Lumens: 4500 lm

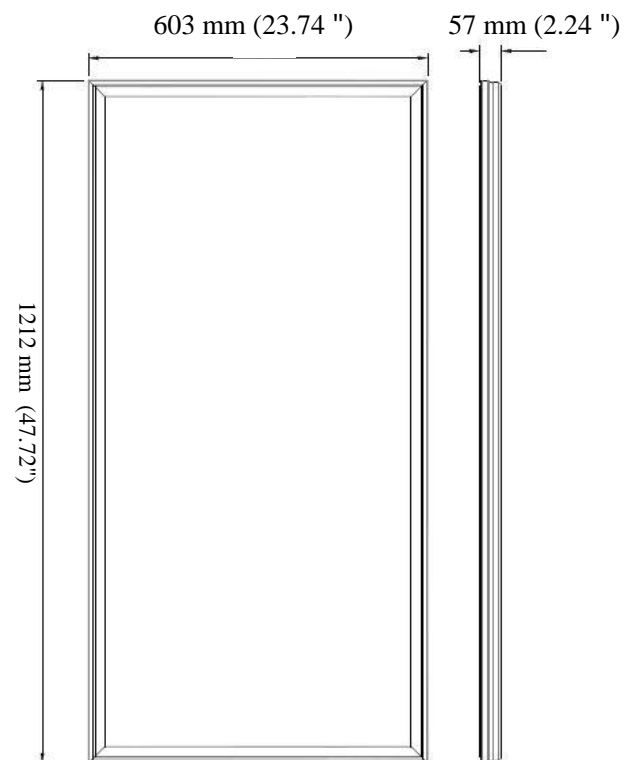
CCT: 4000K & 5000 K

Color Accuracy: CRI> 80

L70 lifetime: 94,000h

PF>0.95, THD<10%

Spacing Criteria: C0/180: 1.25; C90/270: 1.25



www.atgelectronics.com Toll free: 877-461-5333 E-mail: sales@atgelectronics.com



ATG ELECTRONICS

Ordering Information

Typical Order Example: FPUS24L3400002

SERIES	STANDARD	SIZE	VOLTAGE	CCT	OPTION A	OPTION B
FP=Flat Panel	US=US Size EU=EU Size	24=2×4ft	L3=36VDC	40=4000K 50=5000K	00=Default	02=ECO Panel

Product Specifications

CONSTRUCTION & MATERIALS	
Dimension	603*1212 mm (23.74*47.72 inch)
Housing	Cold rolled steel sheet and PC diffuser
Finish Color	Matt White
Lens Type	Frosted

ENVIRONMENTAL SYSTEM	
Work Environment	Indoor use (applicable for dry environments)
Operating Temperature	-20°C~50°C (-4~122°F)

OPTICAL SYSTEM	
Luminous Flux	4500 lm
Luminous Efficacy	90 lm/W
Color Temperature	4000K & 5000 K
CRI	80+
Spacing Criteria	C0/180: 1.25; C90/270: 1.25
Lumen maintenance at 6000h	98.28%
Dimming	0-10V dimming

ELECTRICAL SYSTEM	
Input Voltage	100-277VAC 50/60HZ
Off State Power	0W
Power Consumption	50W
Power Factor	>0.95
THD	<10%

REGULATORY & VOLUNTARY QUALIFICATIONS	
Design Lights Consortium	
Lighting Facts, LM79, LM80	
ETL & cETL (ETL No.: 4003329)	
CE, RoHS, Title 24	
UL/cUL, KEMA, and CE certified external driver	



www.atgelectronics.com Toll free: 877-461-5333 E-mail: sales@atgelectronics.com



ATG ELECTRONICS

ATG Electronics® iBright™ ECO Panel

USER GUIDE

NOTE:

Please read the entire manual to fully understand and safely use this product.

The products can be used at the voltage of 100-277V AC, 50/60HZ, suitable for indoor dry environment.

Specifications are subject to change without notice. Please visit www.atgelectronics.com for the most recent user guide versions.

UNPACKING

- 1) Unpack and carefully examine the product.
- 2) Report any damage and save all packing materials if any parts were damaged during shipping.
- 3) Do not attempt to use this apparatus if it is damaged.

INSTALLATION INSTRUCTIONS

- 1) CONSULT A QUALIFIED ELECTRICIAN TO ENSURE CORRECT BRANCH CIRCUIT CONDUCTOR.
- 2) The product should be installed and operated by a qualified electrician or technician in accordance with relevant local codes.
- 3) Risk of electric shock. Ensure that main power source is off when wiring or soldering the sections of the product.

MAINTENANCE

- 1) Prior to cleaning the product, make sure it has been disconnected from the power supply.
- 2) Use a dry or slightly moistened cloth for cleaning.
- 3) Never use any chemicals or abrasive materials for cleaning.

INSTALLATION CONSIDERATIONS

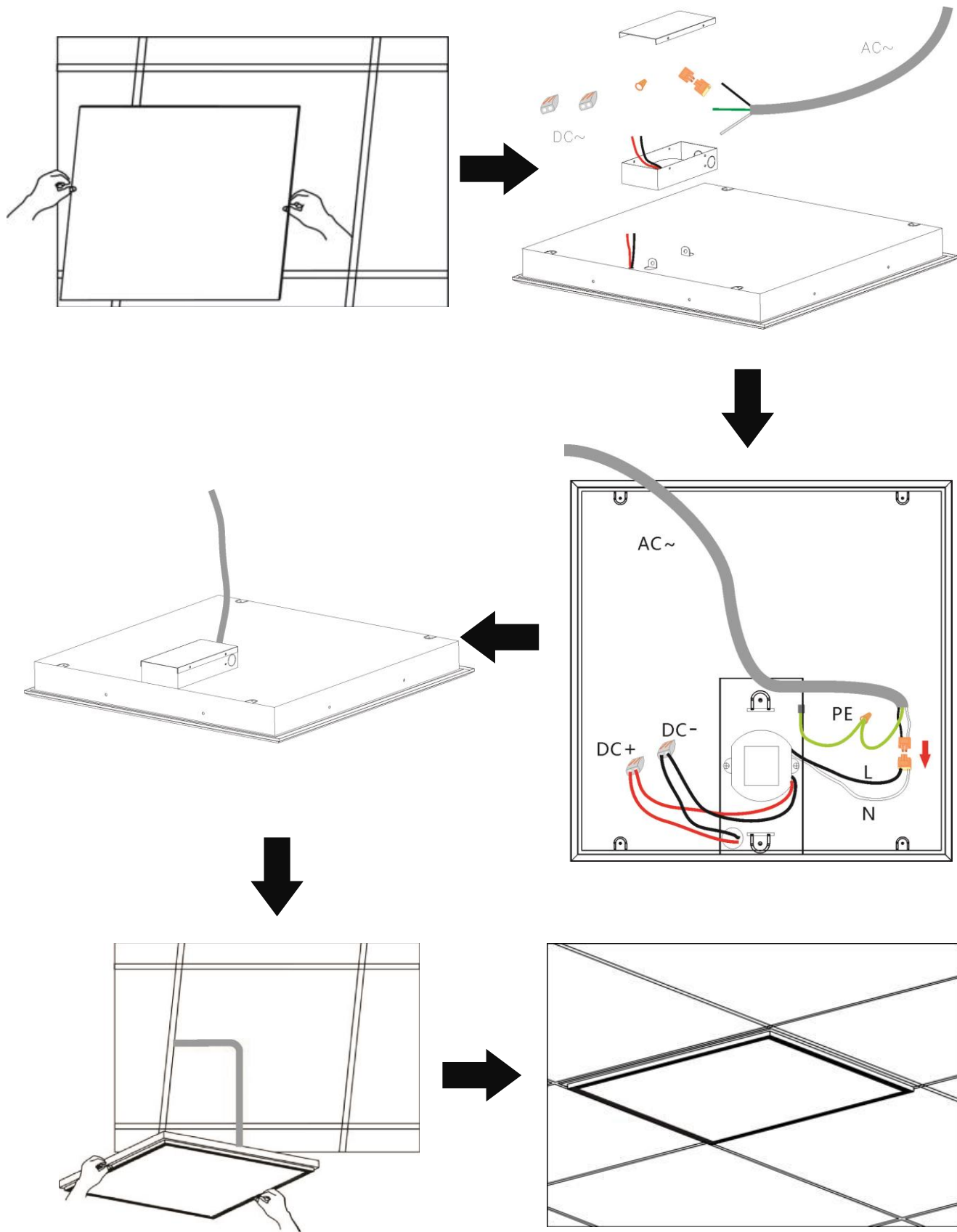
- 1) The product must be at a minimum distance of 0.2 m from ANY FLAMMABLE MATERIALS.
- 2) The product must not be installed into ceilings or walls that contain heat-insulating materials.

INSTALLATION STEPS

1. Built-in

- 1) Turn off main power before installation.
- 2) Remove the ceiling panel.
- 3) Mount the driver box to the back of the ECO Panel.
- 4) Connect the input and ground wires (bare end) of the driver box to the main power outlet.
- 5) Connect the ECO Panel to the corresponding connectors on the output wires of the driver box.
- 6) Fix the ECO Panel into the ceiling.

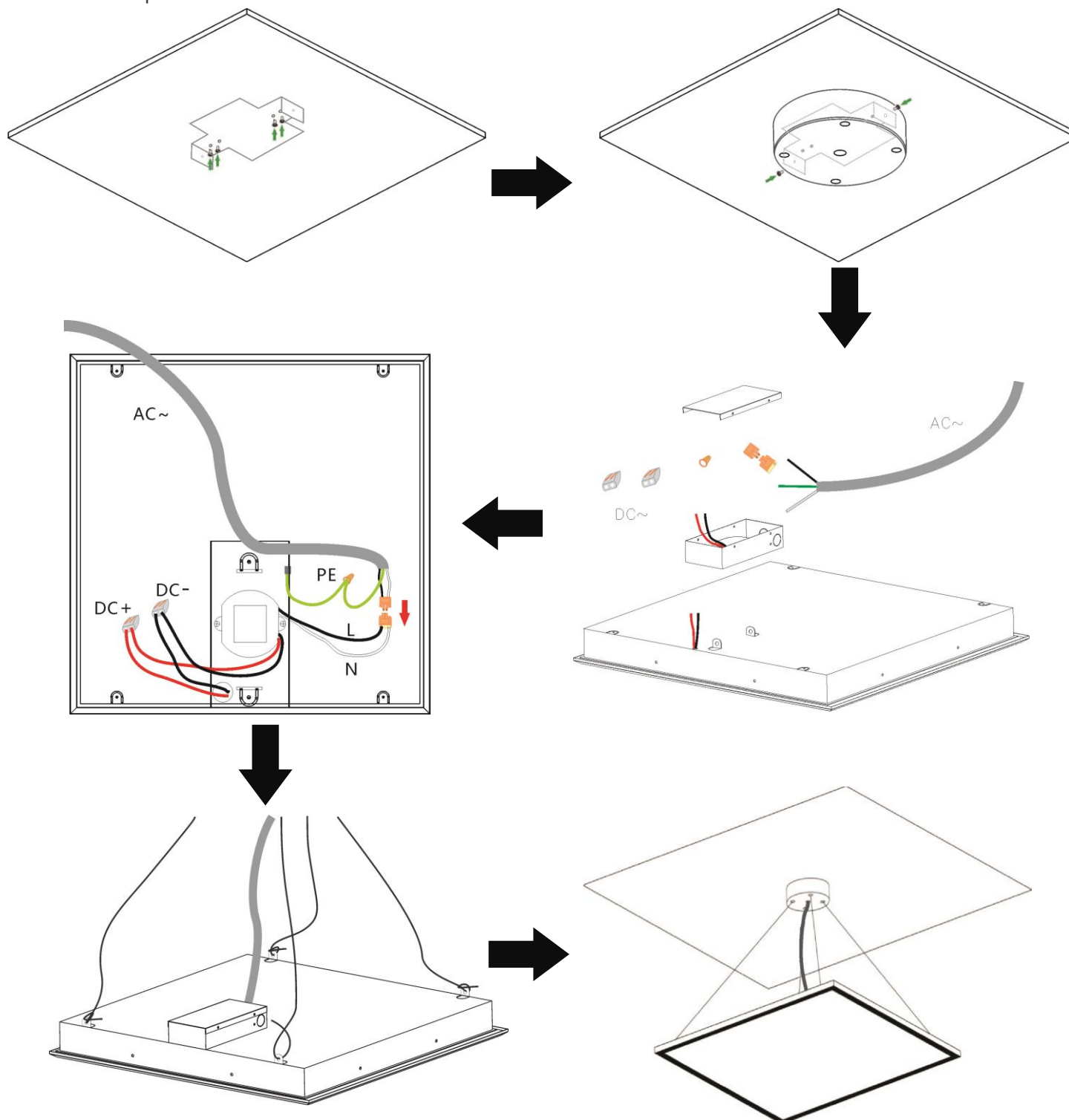




2. Suspended

Accessories for suspended installation are available at an extra charge.

- 1) Turn off the main power before installation.
- 2) Fix the suspended box to the ceiling with screws.
- 3) Mount the driver box to the back of the ECO Panel.
- 4) Connect the ECO Panel to the corresponding connectors on the output wires of the driver.
- 5) Connect the input and ground wires (bare end) of the driver to the main power outlet.
- 6) Fasten the suspended cables to the hooks of the ECO Panel.



lighting
facts
LED Product Partner



www.atgelectronics.com Toll free: 877-461-5333 E-mail: sales@atgelectronics.com



ATG ELECTRONICS

3. Surface Mount

Mounting box is available at an extra charge.

- 1) Turn off the main power before installation.
- 2) Fix the mounting box to the ceiling with screws.
- 3) Mount the driver box to the back of the ECO Panel.
- 4) Connect the input and ground wires (bare end) of the driver box to the main power outlet.
- 5) Connect the ECO Panel to the corresponding connectors on the output wires of the driver box.
- 6) Fix the ECO Panel to the mounting box with screws from sideways.

